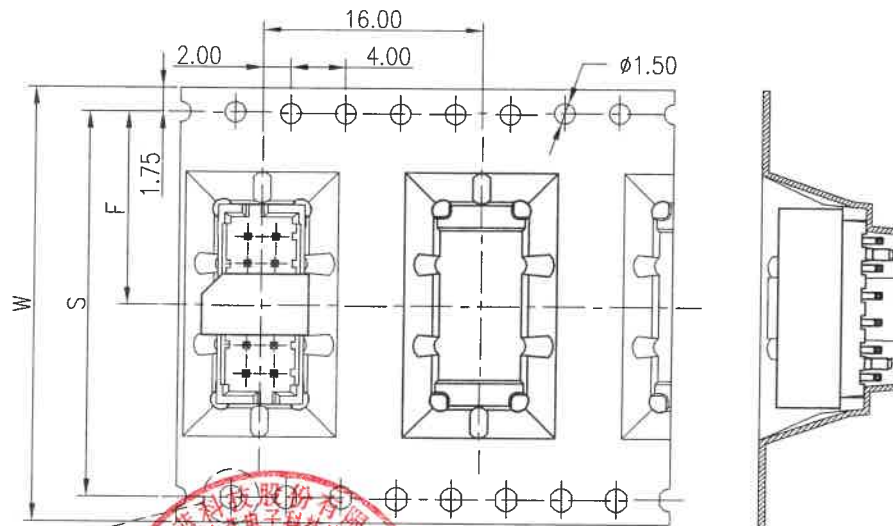
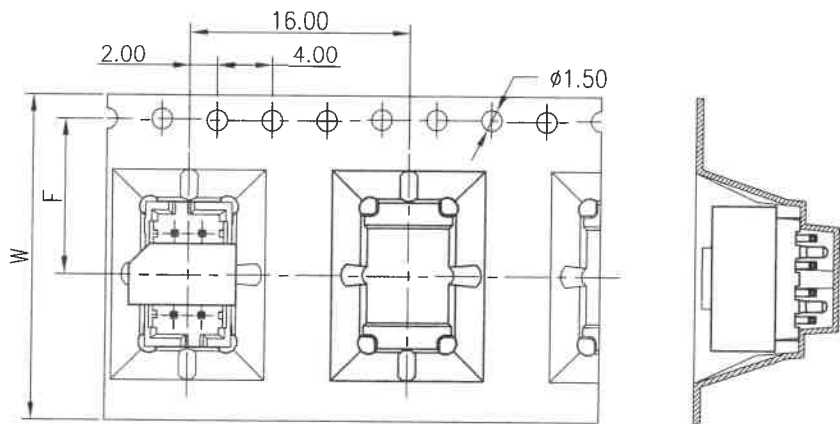




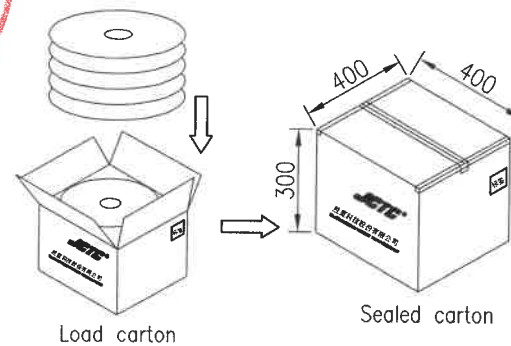
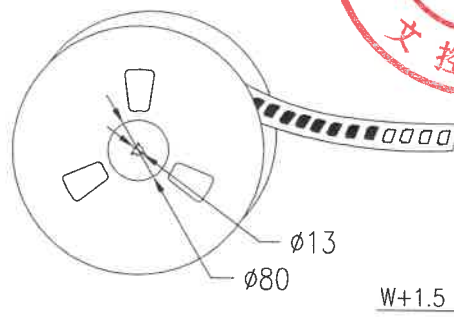
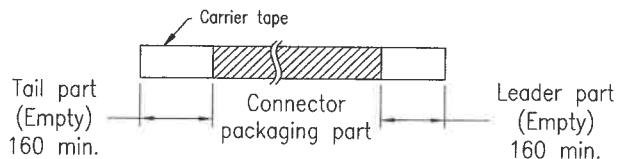
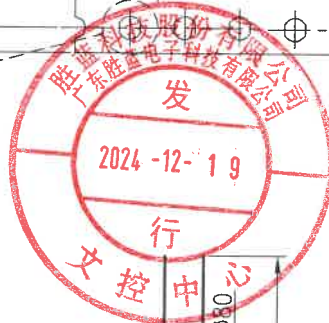
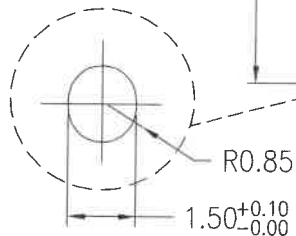
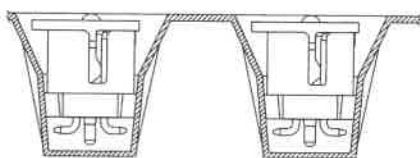
RoHS 2.0+HF

2x3P~2x4P Contacts

2x5P~2x22P Contacts



Unreeling direction →



Number of Contacts	W±0.3	F±0.1	S±0.1	pcs/Reel	pcs/Box
2x3~2x4P	24	11.50	--	500	5,000
2x5P~2x7P	32	14.20	28.40	500	4,000
2x8P~2x13P	44	20.20	40.40	500	3,000
2x14P~2x19P	56	26.20	52.40	500	2,500
2x20P~2x22P	72	34.20	68.40	500	1,500

REV.	REVISION RECORD	DATE	GENERAL TOLERANCES		SCALE	NAME	DATE	PART NO.	DWG NO.	
A0	The new version file were released	2020.09.29		LINEAR	1:1	J-	24.12.13	12012W00-2XNPX-SF-S1-XX-NK-R	ENDE05	
A1	WR210517127	2021.05.17		ANGLES	APPROVED					
A2	WR2111290309	2021.11.24	UNIT: MM	0.0±0.15	X° REF±6°	DESIGNER	mm	24.12.13	TITLE	
A3	ECN202412131255	24.12.13	SIZE: A4	0.000±0.08	X° X' ±2°	DRAWN	WJY	24.12.13	2.00mm PITCH DUAL ROW SMT TYPE 180° WAFER (带孔)	