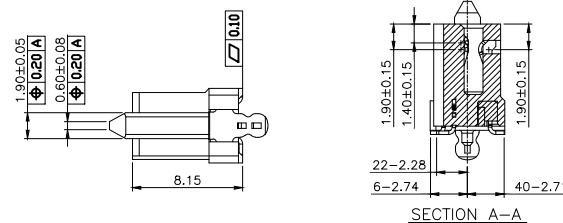
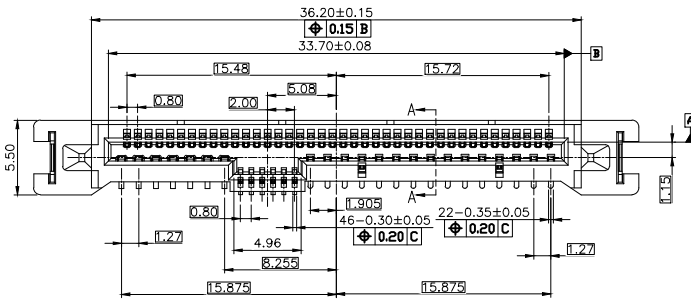
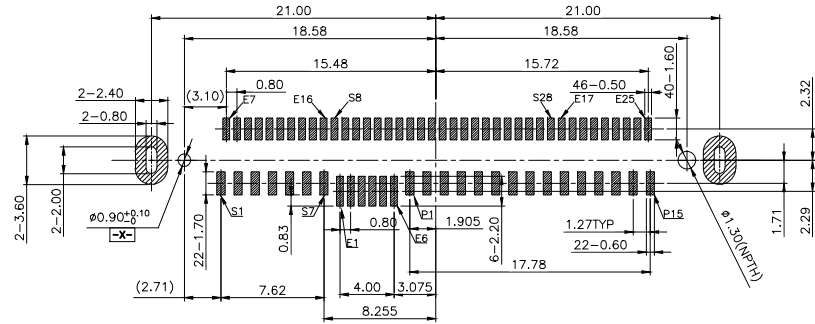
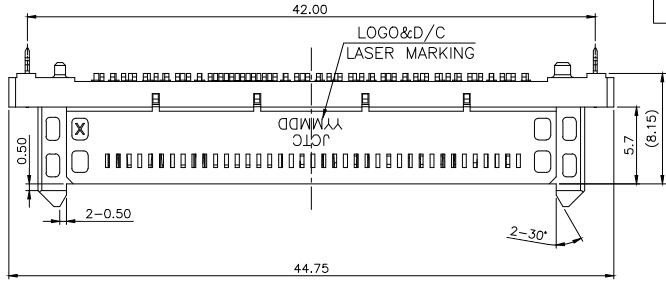


RoHS 2.0+HF

日期编码说明  
 Y Y M M D D  
 日 (11代表11号)  
 月 (09代表9月)  
 年 (23代表2023年)



NOTES:

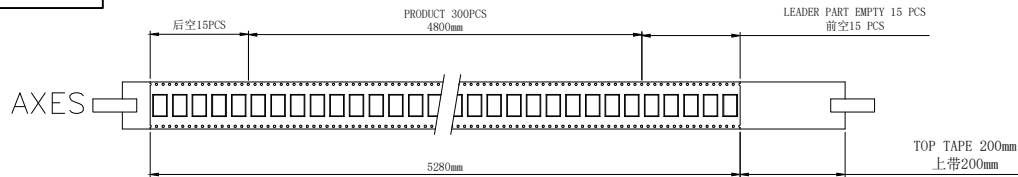
- MATERIAL:
  - HOUSING:HIGH TEMPERATURE THE THERMOPLASTIC, UL94V-0,COLOR BLACK.
  - CONTACTS:PHOSPHOR BRONZE  
 PLATING:REFER TO P/N SYSTEM ON MATING AREA.  
 1.27um MIN NICKEL UNDER PLATED OVERALL.  
 2.54um MIN PURE MATTE TIN ON SOLDER TAILS.
  - SOLDER CLIPS:COPPER ALLOY  
 2.54um MIN PURE MATTE TIN OVER 1.27um MIN NICKEL.
- GENERAL SPECIFICATION
  - CURRENT RATING: 1.5A/PER PIN (POWER SECTION).
  - CONTACT RESISTANCE: 30mΩ MAX (INITIAL).
  - INSULATOR RESISTANCE: 1000MΩ MIN.
  - DIELECTRIC WITHSTANDING VOLTAGE: 500 VAC.
  - OPERATION TEMPERATURE: -40°C~+80°C.
- PREMATING AT P4 & P12
- SUPPORT PCIe GEN5

8 08-F V S 05 68 A-30  
 1 2 3 4 5 6 7 8 9

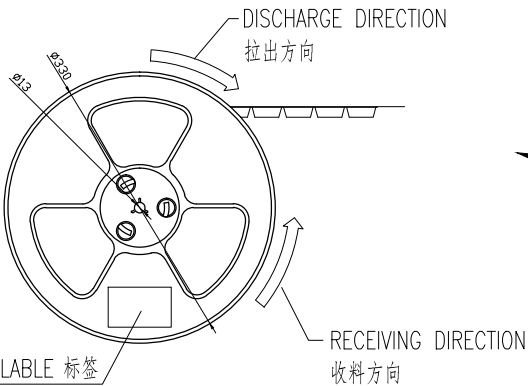
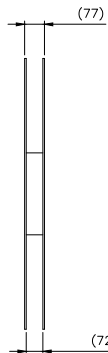
- 高速连接器
- PITCH:08:0.8pitch
- FEMALE
- V:180°
- S:SMT
- O5:TYPE:8.15mm;SOLDER CLIPS DIP
- PINS NO. 68:68PINS
- A:LCP BLACK
- Contact Area plating on contacts
- 30: Au 30u"

REV.	REVISION RECORD	DATE	UNIT: MM	GENERAL TOLERANCES		SCALE 1:1	NAME	DATE	PART NO.	DWG NO.						
				LINEAR	ANGLES											
A0	First release	24.02.23	SIZE: A4	0.0±0.30	X° REF±6°	APPROVED	Daniel Dong	24.12.27	808-FVS0568A-30	ENDE05						
A1	ADD D/C	24.07.18		0.00±0.25	X° ±3°	DESIGNER	Jackie Tan	24.12.27								
A2	UPDATED DRAWING	24.12.27		0.000±0.10	X° X° ±2°	DRAWN	Jackie Tan	24.12.27								
									PCIe/SAS VT 68PIN FEMALE				REV	A2	SHEET	1/2

RoHS 2.0+HF

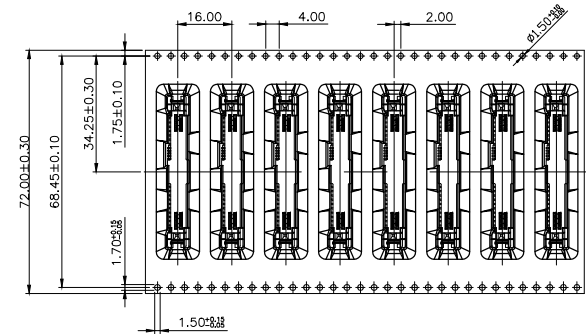
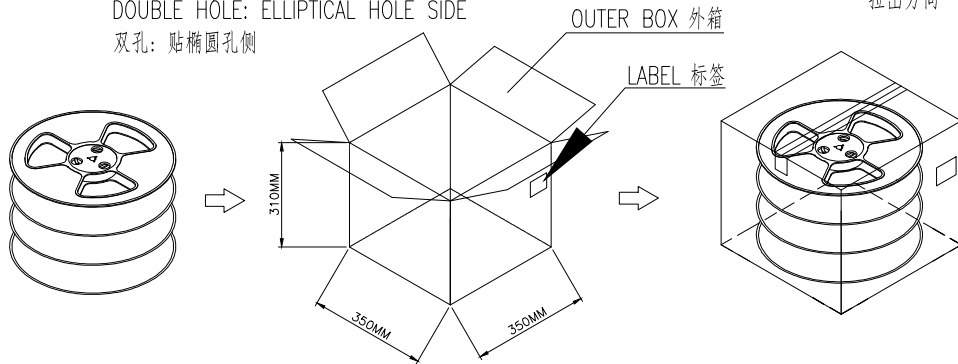
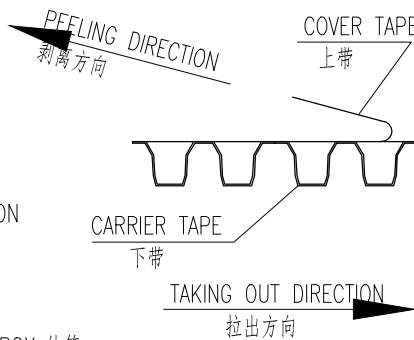


TAKING OUT DIRECTION



SINGLE HOLE: NONE HOLE SIDE  
单孔: 贴无链孔侧  
DOUBLE HOLE: ELLIPTICAL HOLE SIDE  
双孔: 贴椭圆孔侧

COVER TAPE PEEL STRENGTH: 20~120g  
上带剥离力量: 20~120g  
速度 PEEL SPEED: 300mm/minute



TAKING OUT DIRECTION

REEL/PCS	CARTON/R	CARTON/PCS
300	3	900

NOTE:

- CARRIER CAMBER IS WITHIN 1MM IN 100mm ; 带长100mm内容许弯曲度1mm;
- 10 SPROCKET HOLE PITCH CUMULATIVE TOLERANCE ±0.2mm; 圆孔十个孔距离累计允许公差为±0.2mm
- CARRIER TAPE MATERIAL FOR PS ; 下带材质为PS材质; COLOR颜色: BLACK黑色;
- BRACER保护带: COLOR颜色: NATURAL透明色; 厚度0.40mm最小;
- THICKNESS=0.50±0.05 ; 材料厚度为0.50±0.05mm;
- COVER TAPE上带: 冷风自粘带;

REV.	REVISION RECORD	DATE	UNIT: MM	GENERAL TOLERANCES		SCALE 1:1	NAME	DATE	PART NO.	DWG NO.						
				LINEAR	ANGLES											
A0	新图面发行	24.02.23	SIZE: A4	0.0±0.30	X° REF±6°	APPROVED	Daniel Dong	24.12.27	808-FVS0568A-30	ENDE05						
A1	ADD D/C	24.07.18		0.00±0.25	X° ±3°	DESIGNER	Jackie Tan	24.12.27								
A2	UPDATED DRAWING	24.12.27		0.000±0.10	X° X° ±2°	DRAWN	Jackie Tan	24.12.27								
									TITLE				PCIe/SAS VT 68PIN FEMALE			
										REV	A2	SHEET	2/2			