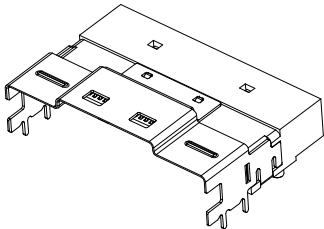


- SPECIFICATIONS:
- Material And Finish:
    - Insulator: High Temperature Thermoplastic UL94 V-0 Black
    - Contact: Copper Alloy. Plating refer to P/N System
    - Latch: Stainless Steel. Solderable Nickel Plated Overall.
  - Electrical Specification:
    - Contact Resistance:  $\Delta 20m$  Ohms Max.
    - Insulation Resistance: 1000M Ohms Min. At 100V DC For 60s.
    - Withstanding Voltage: 300V Min. DC For 60 Seconds.
    - Voltage Rating: 30V AC.
    - Current Rating: 0.5A Per Pin.
  - Mechanical Specification:
    - Latch Retention Force: 50N Min.
    - Mating Force: 40N Max.
    - Unmating Force: 3N Min.
    - Durability: 250 Cycles.
  - Environmental Specification:
    - Operating Temperature:  $-40^{\circ}C \sim +85^{\circ}C$ .
    - Temperature Rise:  $30^{\circ}C$  Max.
  - The Product Using Material And Processing Must Conform To The "WI-PZ-142" HSF Technical Standard Control Requirements.
  - P/N Order



REV.	REVISION RECORD	DATE	UNIT: MM	GENERAL TOLERANCES		SCALE 1:1	NAME	DATE	PART NO.	DWG NO.				
				LINEAR	ANGLES									
A0	新图面发行	2020.04.17	A4	0.0 $\pm 0.25$	$X^{\circ}$ REF $\pm 6^{\circ}$	APPROVED	Daniel Dong	2024.11.29	80601W10-2X74PA-SF-XX2	ENDE05	TITLE SLIMSAS X8 R/A SOCKET			
A1	增加包规	2024.11.29		0.00 $\pm 0.15$	$X^{\circ} \pm 3^{\circ}$	DESIGNER	Jackie Tan	2024.11.29						
				0.000 $\pm 0.08$	$X^{\circ} X^{\circ} \pm 2^{\circ}$	DRAWN	Jackie Tan	2024.11.29						
											REV	A1	SHEET	1/2

1

2

3

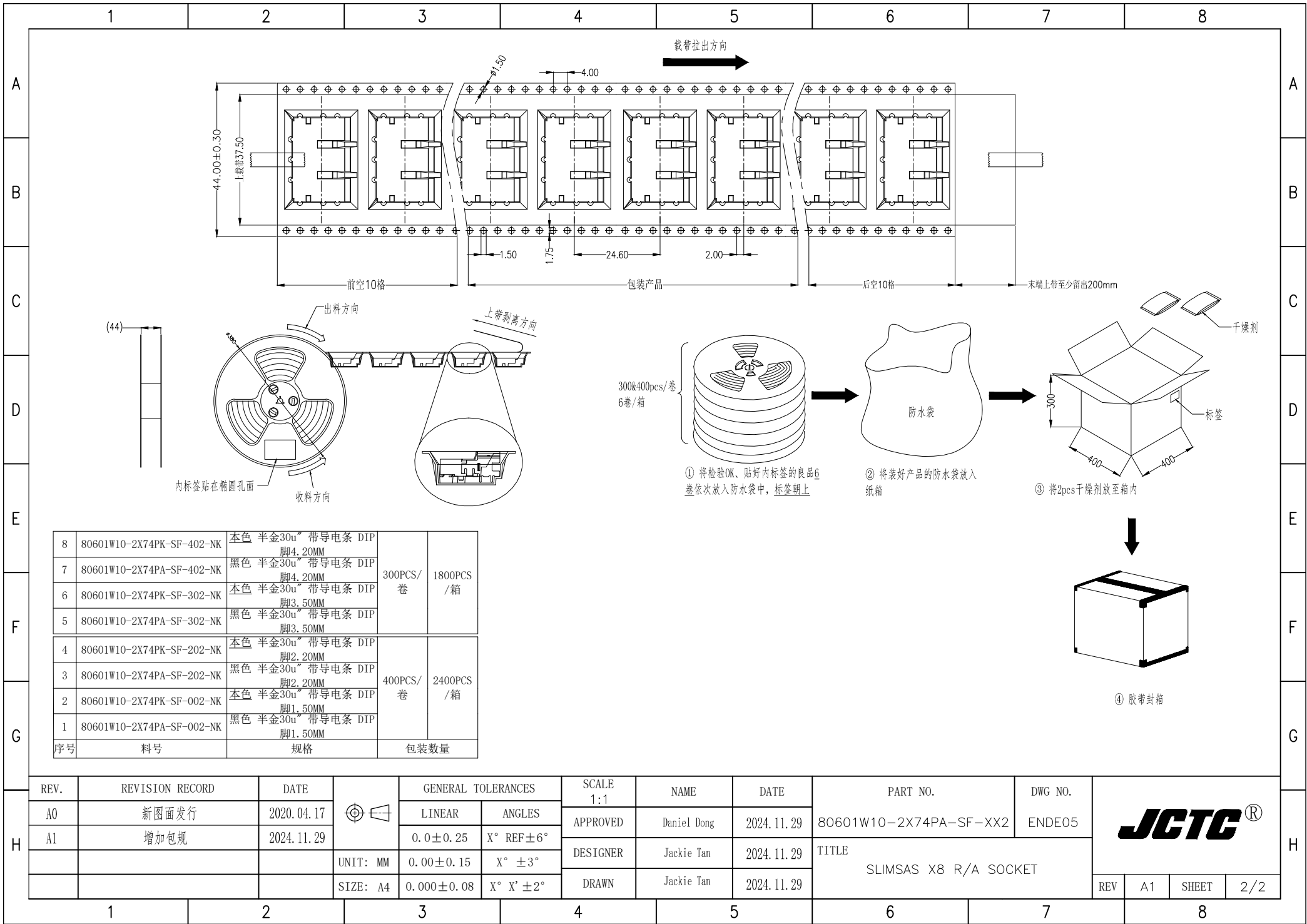
4

5

6

7

8



8	80601W10-2X74PK-SF-402-NK	本色 半金30u" 带导电条 DIP 脚4.20MM	300PCS/ 卷	1800PCS /箱
7	80601W10-2X74PA-SF-402-NK	黑色 半金30u" 带导电条 DIP 脚4.20MM		
6	80601W10-2X74PK-SF-302-NK	本色 半金30u" 带导电条 DIP 脚3.50MM	400PCS/ 卷	2400PCS /箱
5	80601W10-2X74PA-SF-302-NK	黑色 半金30u" 带导电条 DIP 脚3.50MM		
4	80601W10-2X74PK-SF-202-NK	本色 半金30u" 带导电条 DIP 脚2.20MM	400PCS/ 卷	2400PCS /箱
3	80601W10-2X74PA-SF-202-NK	黑色 半金30u" 带导电条 DIP 脚2.20MM		
2	80601W10-2X74PK-SF-002-NK	本色 半金30u" 带导电条 DIP 脚1.50MM		
1	80601W10-2X74PA-SF-002-NK	黑色 半金30u" 带导电条 DIP 脚1.50MM		
序号	料号	规格	包装数量	

REV.	REVISION RECORD	DATE	UNIT: MM	GENERAL TOLERANCES		SCALE 1:1	NAME	DATE	PART NO.	DWG NO.		
A0	新图面发行	2020.04.17		SIZE: A4	LINEAR	ANGLES	APPROVED	Daniel Dong	2024.11.29	80601W10-2X74PA-SF-XX2		ENDE05
A1	增加包规	2024.11.29	0.0±0.25		X° REF±6°	DESIGNER	Jackie Tan	2024.11.29	TITLE			
			0.00±0.15	X° ±3°	DRAWN	Jackie Tan	2024.11.29	SLIMSAS X8 R/A SOCKET		REV		
			0.000±0.08	X° X° ±2°						A1	SHEET	2/2

1

2

3

4

5

6

7

8