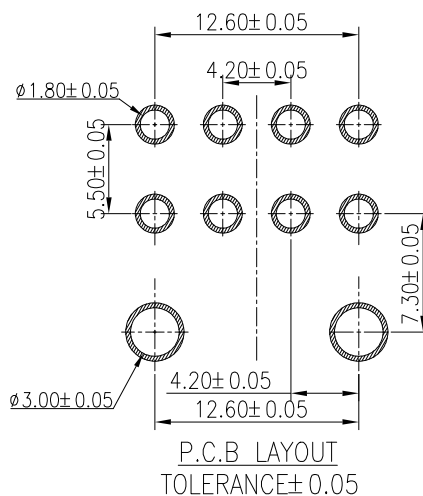
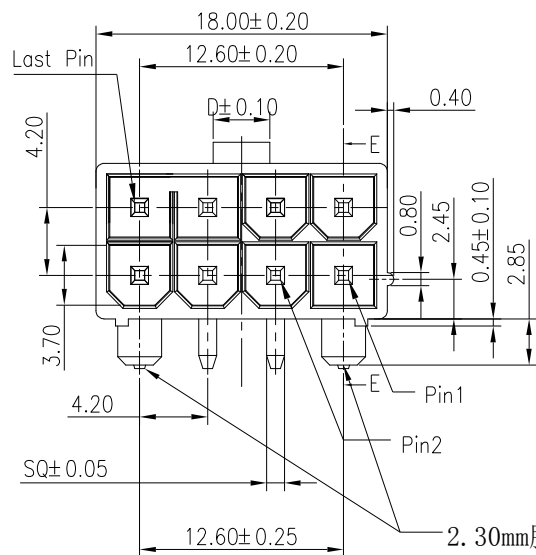
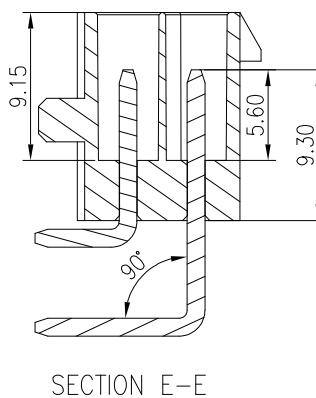
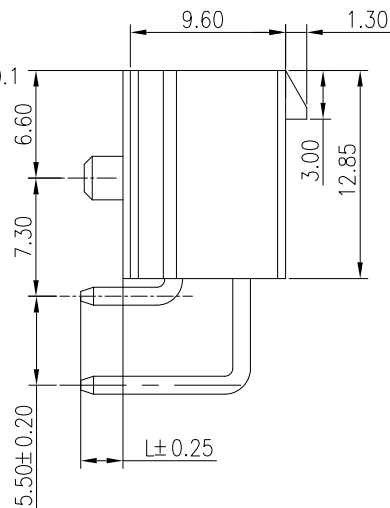
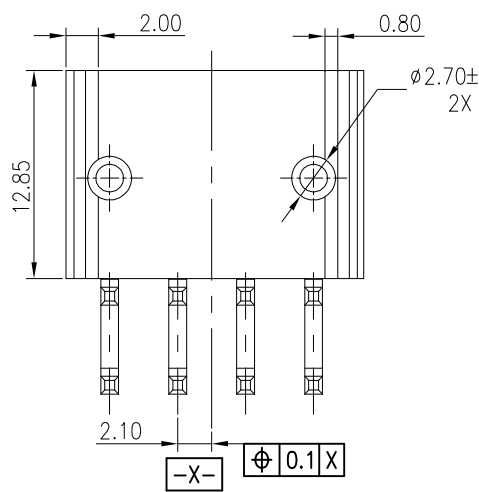


环保物料



2.30mm脚长, Pin针不露出塑胶柱
2.60mm脚长, Pin针露出塑胶柱



规格:

额定电压:600V AC / DC
额定电流:9A AC / DC
耐压:1500V AC/分钟
温度范围:-40°C~+105°C
绝缘电阻:≥1000MΩ
接触电阻:≤10mΩ
经环境试验后:≤20mΩ
PIN保持力:3次回流焊后1.5Kg/PIN Min.

材料:

主体:LCP/PA9T/PA66 无卤
PIN针:C2680,

34202 W90-M XX G-XX X X X X
① ② ③ ④ ⑤ ⑥ ⑦ ⑧ ⑨ ⑩

- ① Series No.
- ② W90:90° W00:180°
- ③ M:双排方针SQ1.07
- ④ XX:2XN PIN
- ⑤ G:带左右双实柱7~8PIN缺口
- ⑥ 2E= Tin:100u"min Ni:40u"min
OA=Gold-flash Ni:40u"min
3A=Au:3u"min Ni:40u"min
HA=Au:30u"min Ni:40u"min
- ⑦ Material:
L:LCP 9:9T P:66
- ⑧ Color:
N=Natural A:Black W:White
- ⑨ Type:
A: 针长L=2.3mm,挂台长度D=7.60mm
B: 针长L=3.5mm,挂台长度D=7.60mm
2: 针长L=2.6mm,挂台长度D=3.50mm
3: 针长L=2.3mm,挂台长度D=3.50mm
- ⑩ R:载带包装 T:吸塑盒包装

REV.	REVISION RECORD	DATE	GENERAL TOLERANCES	SCALE 1:1	NAME	DATE	PART NO.	DWG NO.	JCTC ®
A0	新版发行	21.09.03	0.0±0.25	X° REF±6°			34202W90-M04G-xxxxxx	ENDE05	
A1	规格合并	24.07.10	0.00±0.20	X° ±3°			TITLE		
			0.000±0.10	X° X' ±2°	DRAWN	Zhang Peng	24.07.31	4.2mm Crimp Style connectors	
			UNIT: MM						REV
			SIZE: A4						A1
									SHEET
									1/1