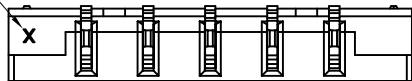
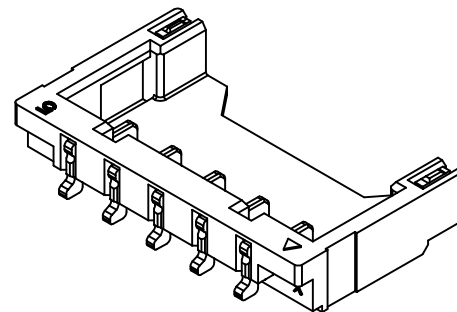
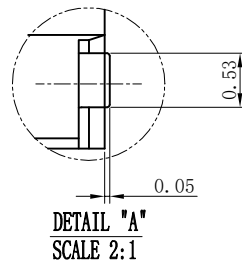
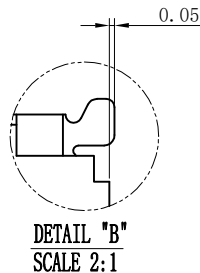
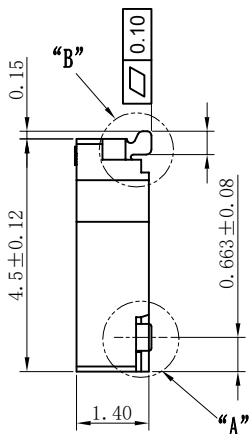
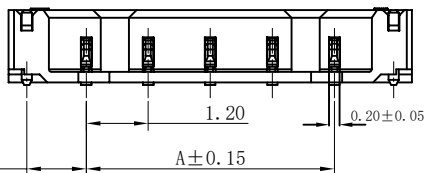
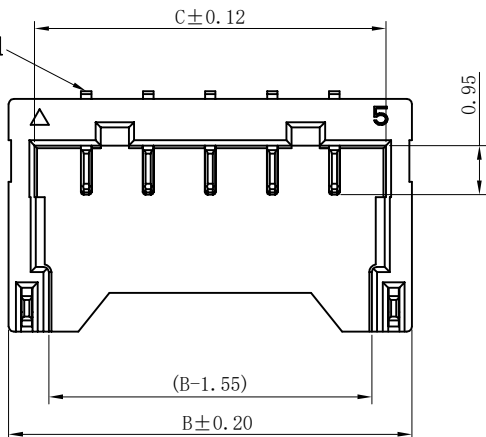


环保物料

模穴号



Circuit 1



Dimensional Ordering Information:			
Circuits	Dimensions		
Part No	A	B	C
5P	4.80	7.80	6.80

NOTES:

Rated Voltage : 50V AC/DC
 Rated Current : 2A AC,DC
 Withstand Voltage : 500V AC/minute
 Contact Resistance : 40mΩ(MAX.)
 Insulation Resistance : 100MΩ(MIN.)
 Temperature Range : -25°C~+85°C

The product using material and processing must conform to the "WI-PZ-142"HSF technical standard control requirements

ITEM	PARTS	Q'TY	MATERIAL	REMARK
3	PEG	2	C2680	Ni 40u" UNDER PLATING OVER ALL,Sn PLATING OVER ALL
2	CONTACT	5	C2680	Ni 100u" UNDER PLATING OVER ALL, G/F PLATING OVER ALL
1	HOUSING	1	PA10T	UL94V-0,BLACK

REV.	REVISION RECORD	DATE	GENERAL TOLERANCES		SCALE	NAME	DATE	PART NO.	DWG NO.				
A0	新图面发行	2024.11.27	LINEAR	ANGLES	1:1	Frey Yang	2024.11.27	11203WR-105A-5AR01	ENDE05				
			0.0±0.30	X° REF±6°	APPROVED	Daniel Dong	2024.11.27	TITLE					
			0.00±0.25	X° ±3°	DESIGNER	Janny	2024.11.27	1.2PH BTW CONN H1.45 RECEPTACLE					
			UNIT: MM	0.00±0.10	X° X' ±2°	DRAWN				REV	AO	SHEET	1/1

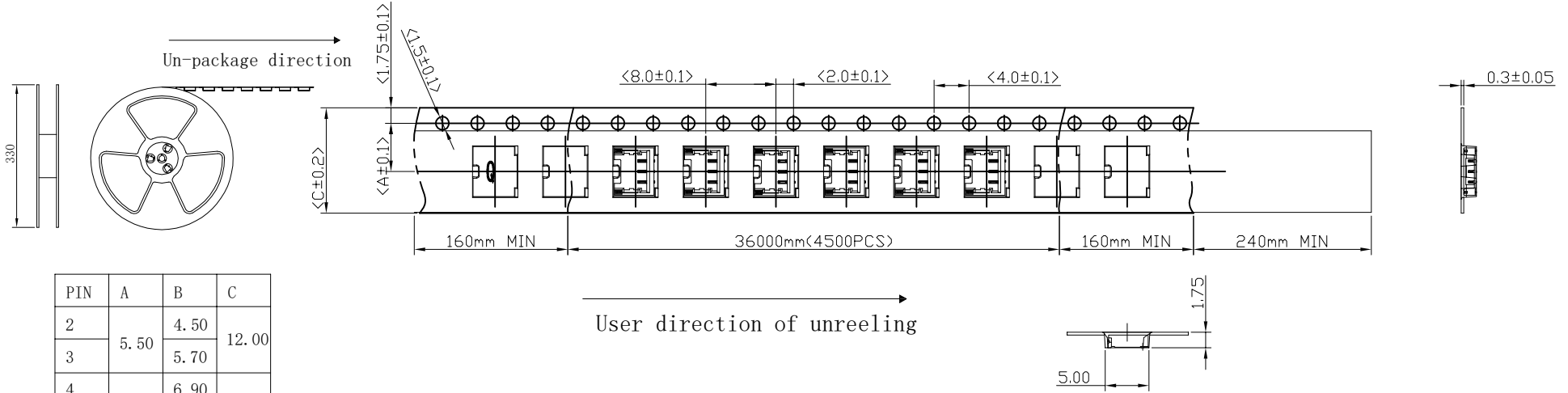
由 Autodesk 教育版产品制作

由 Autodesk 教育版产品制作

ROHS2.0+HF

机密文件

1、 There should be at least 160mm empty packet at the beginning of carrier tape, and at least 160mm empty packet at the ending.
 The cover should be 240mm longer than carrier tape.
 Package amount: 4500 PCS/reel.

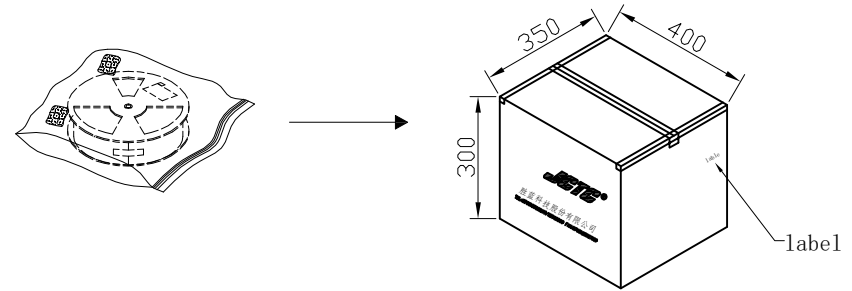
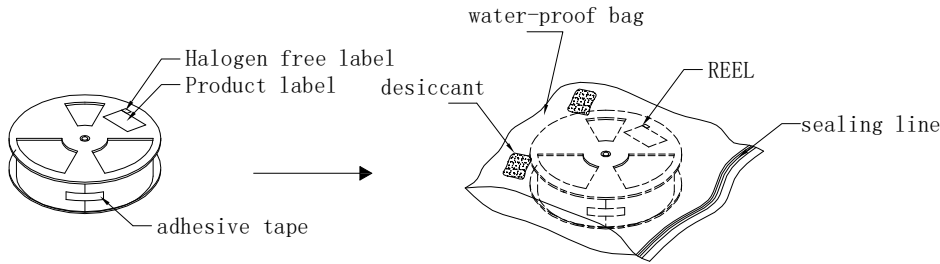


PIN	A	B	C
2	5.50	4.50	12.00
3		5.70	
4	7.50	6.90	16.00
5		8.10	
6		9.30	

User direction of unreeling

2、 Put the label on the reel firstly. Secondly put the reel and two bags desiccant into the water-proof bag, lastly seal the water-proof bag with heat-seal method.

3、 Put the wafter-proof bag with reel into the carton, until it's full, and then seal the carton with adhesive tape, lastly put the label onto the carton



A0	新图面发行	2024.11.27	+	1:1	Frey Yang	2024.11.27	11203WR-105A-5AR01	ENDE05	 JCTC® TERMINAL&CONNECTORS
					Daniel Dong	2024.11.27			
					Janny	2024.11.27	1.2PH BTW CONN H1.45 RECEPTACLE		